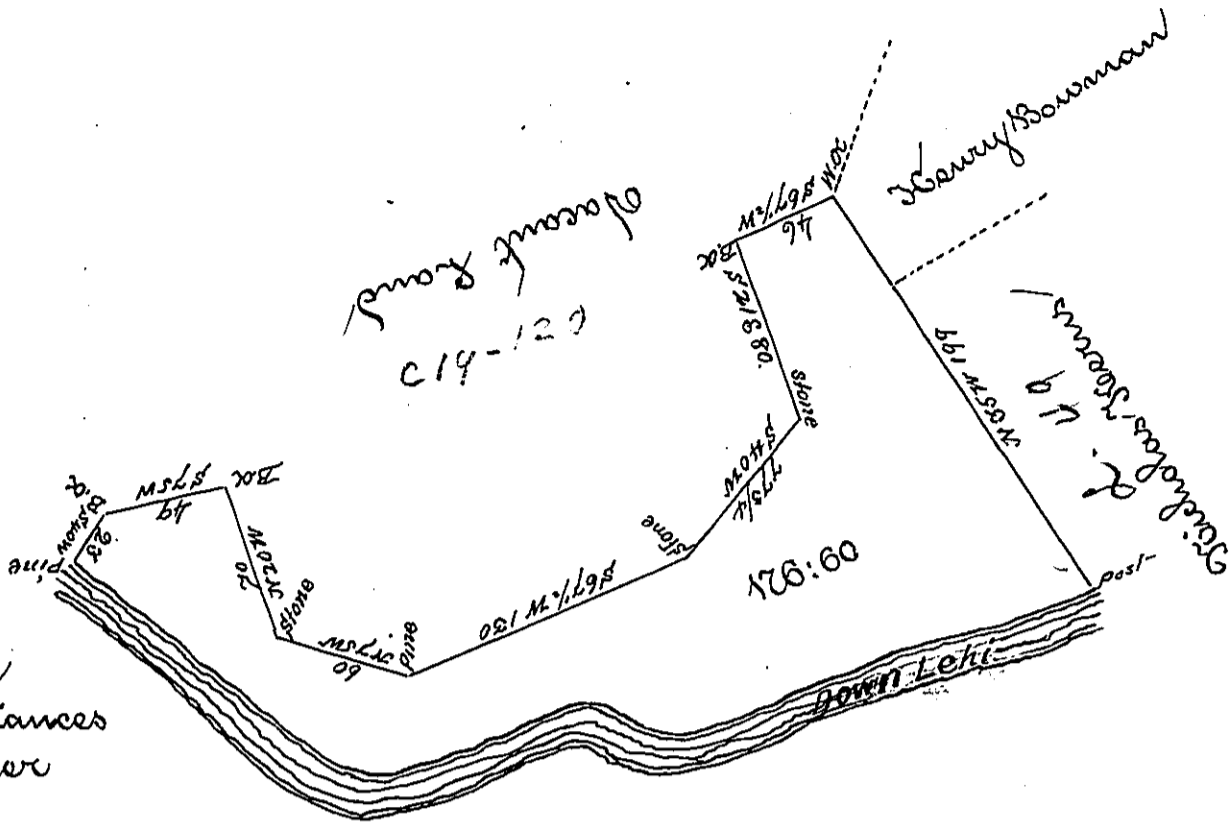


Below Line Carbon  
Northampton



Courses and Distances  
Down Lehigh River

S 55 E	156
N 70 E	106
S 70 E	34
N 74 E	190
<hr/>	
	486

By virtue of a Warrant dated January the 4<sup>th</sup> 1788 Survey'd the 23<sup>d</sup> of  
March 1788 to Henry Bowman the above described tract of Land situate  
in Saamensing Township Northampton County Containing one hundred  
seventy six acres Sixty perches and allowance

To John Lukens Esq }  
Survey General }

J Geo Palmer

IN TESTIMONY that the above is a copy of the original remaining on file in the  
Department of Internal Affairs of Pennsylvania, made con-  
formably to an Act of Assembly approved the 16th day of  
February, 1833. I have hereunto set my Hand and caused  
the Seal of said Department to be affixed at Harrisburg, this

Second \_\_\_\_\_ day of \_\_\_\_\_ June \_\_\_\_\_ 1896.

*James W. Patton*  
Secretary of Internal Affairs.